



The Nuprime-X H16-AVP is a high-performance HDMI audio decoder featuring AES<sub>3</sub> (AES/EBU) digital audio outputs and XLR analog outputs for integration with professional audio systems. It supports immersive audio formats such as Dolby Atmos® and DTS:X®, along with full eARC HDMI and 4K HDR video pass-through. The unit also includes automatic room calibration for optimized playback in diverse acoustic environments.

H16 AVP  
USER'S MANUAL

## Table of Contents

FCC Notice - Declaration of Conformity Information.....	2
EU Declaration of Conformity .....	3
Safety Instructions.....	4
Description .....	7
Key Features .....	8
Specification .....	10
Home Theater Onscreen Guide .....	11
H16 Modes .....	13
Crossover Settings .....	16
AES Outputs Speaker Layout .....	19
NuPrime's Limited Warranty and Limitation of Liabilities .....	24

### **FCC Notice - Declaration of Conformity Information**

This equipment has been tested and found to comply with the limits for a Class B digital device, pursuant to part 15 of the FCC Rules. These limits are designed to provide reasonable protection against harmful interference in a residential installation. This equipment uses and can radiate radio frequency energy and, if not installed and used in accordance with the instructions, may cause harmful interference to radio communications.

However, there is no guarantee that interference will not occur in a particular installation. If this equipment does cause harmful interference to radio or television reception, which can be determined by turning the equipment off and on, the user is encouraged to try to correct the interference by one or more of the following measures:

- Reorient or relocate the receiving antenna.
- Increase the separation between the equipment and receiver.
- Connect the equipment into an outlet on a circuit different from that to which the receiver is connected.
- Consult the dealer or an experienced radio/TV technician for help.

**WARNING:** Only peripherals complying with the FCC class B limits may be attached to this equipment.

Changes or modifications made to this equipment, not expressly approved by us or parties authorized by us could void the user's authority to operate the equipment. This device complies with part 15 of the FCC Rules. Operation is subject to the following two conditions: (1) This device may not cause harmful interference, and (2) this device must accept any interference received, including interference that may cause undesired operation.

## EU Declaration of Conformity

**CE** Hereby, NuPrime Audio, Inc. declares that this device is in compliance with the essential requirements and other relevant provisions of Directive 2004/108/EC.

The manufacturer of this product is NuPrime Audio, Inc., 30 N Gould St. Ste N, Sheridan, WY 82801, USA.

The Authorized Representative for EMC and product safety is NuPrime Audio, Inc., 30 N Gould St. Ste N, Sheridan, WY 82801,

For any service or guarantee matters please refer to the addresses given in separate service or guarantee documents.

## For Customers in Europe



Disposal of Old Electrical & Electronic Equipment (Applicable in the European Union and other European countries with separate collection systems)

This symbol on the product or on its packaging indicates that this product shall not be treated as household waste. Instead it shall be handed over to the applicable collection point for the recycling of electrical and electronic equipment. By ensuring this product is disposed of correctly, you will help prevent potential negative consequences for the environment and human health, which could otherwise be caused by inappropriate waste handling of this product. The

recycling of materials will help to conserve natural resources. For more detailed information about recycling of this product, please contact your local Civic Office, your household waste disposal service or the shop where you purchased the product.

## Safety Instructions

There are two categories of Safety Instructions included in this manual:

- Product Warnings, (i.e., what must never be done to assure avoiding those hazards that could cause bodily injury or property damage); and
- User Directions (i.e., what must always be done to assure the safe use of your device).

The Safety Instructions contained in this manual have been categorized in accordance with the seriousness of the potential hazards through the use of Signal Words. Those Signal Words, and their intended meanings, are as follows:

**DANGER:** Indicates that a failure to observe the Safety Instructions could result in death or catastrophic bodily injury.

**WARNING:** Indicates that a failure to observe the Safety Instructions could result in serious bodily injury.

**CAUTION:** Indicates that a failure to observe the Safety Instructions could result in minor bodily injury or property damage.

**NOTE:** Designates important information that relates to activities and/or conditions that might result in loss of data and/or damage to your device.

## Safe Use and Operation of Your Device

This equipment emits stray RF energy and will interfere with the reception of signals by airborne electronic navigational devices or medical devices. Do not operate this equipment near any sensitive medical devices.

**WARNING: Use only grounded AC power cords.**

Always immediately disconnect the power to the equipment in the event the device emits an unusual odor or sound or generates smoke.

**WARNING:** Never attempt to disassemble, repair or make any modification to your device. Disassembly, modification or any attempt at repair could cause bodily injury or property damage, as well as damage to the device itself.

**WARNING:** Your device is not a toy. Never allow children to play with your device. Misuse, rough or improper handling of your device by children could result in serious bodily injury for any of the enumerated safety warnings in this manual. In addition, always keep all accessories and components out of the reach of small children as small parts might present a choking hazard. Seek immediate medical attention if choking occurs or if any small part has been swallowed.

**CAUTION:** Never raise the sound volume level too high when using your device with earphones. An excessive sound volume level could cause damage to your hearing.

**WARNING:** To reduce the risk of fire or electric shock, do not expose the unit to moisture or water.

Do not allow foreign objects to get into the enclosure. If the unit is exposed to moisture, or a foreign object gets into the enclosure, immediately disconnect the power cord from the wall. Take the unit to a qualified service person for inspection and necessary repairs.

Read all the instructions before connecting or operating the component.

Keep this manual so you can refer to these safety instructions.

Heed all warnings and safety information in these instructions and on the product itself. Follow all operating instructions.

Do not use this unit near water.

You must allow a minimum 10 cm or 4 inches of unobstructed clearance around the unit.

Do not place the unit on a bed, sofa, rug, or similar surface that could block the ventilation openings. If the unit is placed in a bookcase or cabinet, there must be ventilation of the cabinet to allow proper cooling.

Keep the component away from radiators, heat registers, stoves, or any other appliance that produces heat.

The unit must be connected to a power supply only of the type and voltage specified on the rear panel. Connect the component to the power outlet only with the supplied power supply cable or an exact equivalent. Do not modify the supplied cable.

Do not route the power cord where it will be crushed, pinched, bent, exposed to heat, or damaged in any way. Pay particular attention to the power cord at the plug and where the cord exits the back of the unit.

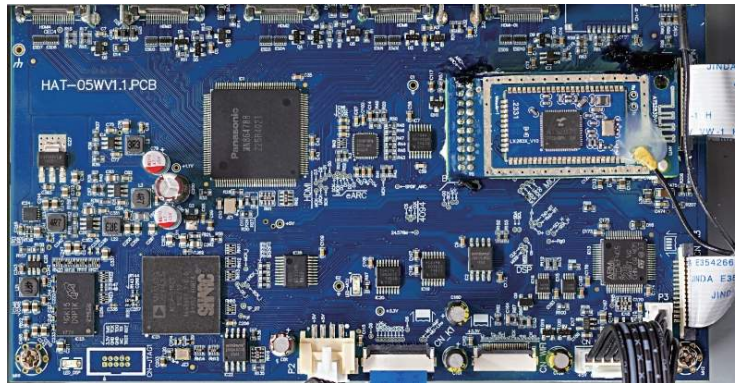
The power cord should be unplugged from the wall outlet during a lightning storm or if the unit is to be left unused for a long period of time.

Immediately stop using the component and have it inspected and/or serviced by a qualified service agency if:

- The power supply cord or plug has been damaged.
- Objects have fallen or liquid has been spilled into the unit.
- The unit has been exposed to rain.
- The unit shows signs of improper operation.
- The unit has been dropped or damaged in any way

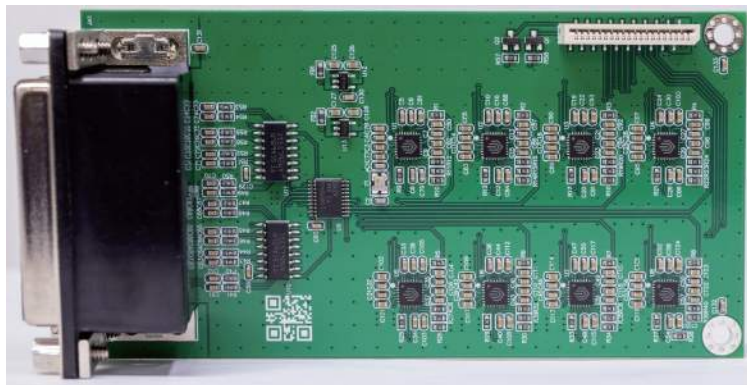
## Description

The Nuprime-X H16-AVP is a high-performance Digital AV Home Theater Processor featuring AES3 (AES/EBU) digital audio outputs and XLR analog outputs for integration with professional audio systems.



**HDMI Decoding**

As part of the Nuprime Fusion-X platform, the H16-AVP connects seamlessly with other Nuprime AES-compatible products, creating a cohesive, scalable audio system.



**I2S to AES Interface Board**

## Key Features

### Audio

- Converts HDMI audio to AES3 (AES/EBU).
- Supports Dolby Atmos® (up to 7.1.4) and Dolby True HD® and all downward Dolby® audio formats.
- Supports DTS:X®, DTS-HD Master Audio®, and all compatible HD audio formats.
- Supports MPEG-H with playback MPEG-H Authoring Suite (MAS) or VLC player on macOS or Windows PC with HDMI output.
- Supports HDMI eARC.
- Integrated automatic room acoustic calibration with built-in testing and compensation for room EQ, channel loudness, and speaker distances. Features one-touch operation for full auto correction while also allowing manual adjustments.
- Ensures low-latency and high-fidelity audio transmission.

### Video

- HDMI 2.0 with 4 inputs and 1 output, supporting HDCP 2.2.
- Supports 3D and 4K HD video transmission.
- HDR formats: Supports Dolby Vision®, HDR10, and HLG for enhanced color and contrast.
- HDMI CEC support for seamless device control.
- HDMI video output mode management for optimized display performance.

### Device Control

- iOS and Android App
- Handheld Remote

The H16 app is available on both iOS and Android as the “NuPrime-X AV” app.



**NuPrime-X AV**

This app functions as a Remote Control for the **NuPrime-X H16** series devices - **Digital AV Home Theater Processor** (H16-AIP, H16-AES, H16-ANA, H16-AVP)




[www.nuprime-x.com](http://www.nuprime-x.com)



Begin by selecting the language, then locate and connect to the device, and choose the device's input.

[www.nuprime-x.com](http://www.nuprime-x.com)



Advanced options include mode selection, channel parameters, and speaker layout configuration.

[www.nuprime-x.com](http://www.nuprime-x.com)

## Specifications

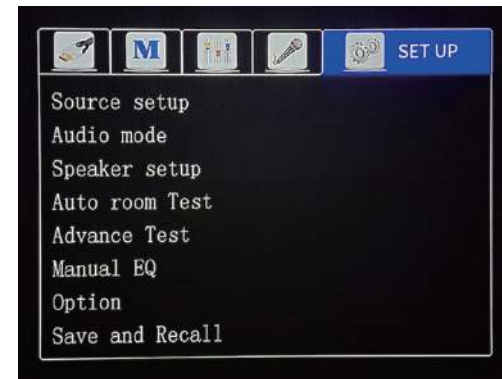
- Output Audio Format: Fixed to 24bit/48kHz
- Input Audio Format:
  - PCM up to 24-bit/192kHz
  - Dolby TrueHD supports up to 24-bit/192kHz
  - DTS-HD Master Audio supports up to 24-bit/192kHz
  - Dolby Digital Plus and Dolby Atmos support 24-bit/192kHz
- Inputs: 4 x HDMI, HDMI eARC
- Outputs:
  - 16 channels AES3 on two DB25 ports (H16 decodes Dolby Atmos up to 7.1.4)
  - 16 channels XLR analog on two DB25 ports (H16 decodes Dolby Atmos up to 7.1.4)
  - 12 channels XLR balanced outputs (4 Vrms)
  - HDMI eARC
- AoIP: Optional AoIP plugin card
- 12V Trigger Out.
- Power Supply: External AC adapter to DC 12V/2.5A
- Product Dimension & weight: Height 55 mm x Width 235 mm x Depth 281 mm; 3kg
- Package Dimension & weight: Height 80 mm x Width 390 mm x Depth 360 mm; 4kg

## Home Theater Onscreen Guide

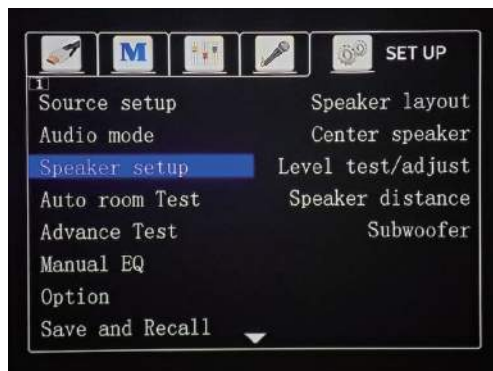
1. Connect the H16-AVP HDMI output (labeled eARC) to your display.



2. By default, the H16-AVP is set to Pure mode (audio is decoded and pass through to AoIP with no DSP processing). Switching to other modes applies sound processing effects, which can alter the audio quality of the AES channels.



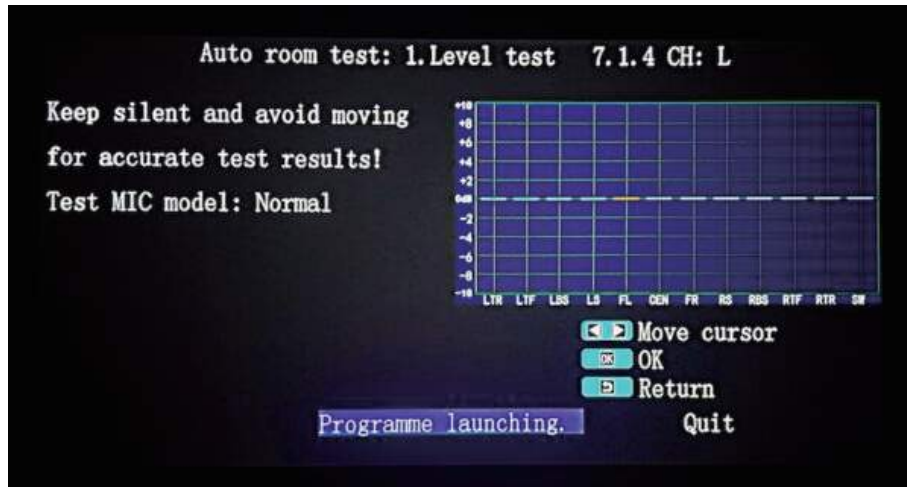
3. Go to Speaker setup.



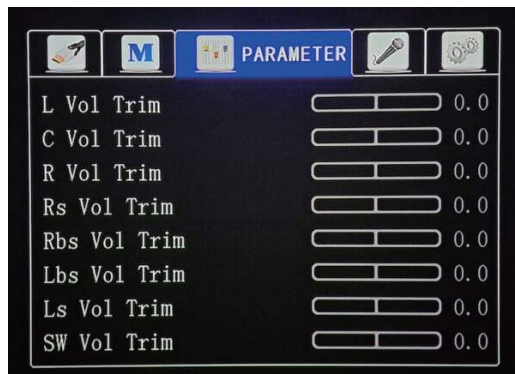
4. Select Speaker layout



Choose the speaker layout that matches your HDMI source.



Return to the Setup menu and select Auto Room Test with the microphone connected to the H16-AVP. Place the microphone at your primary listening position. For the best Dolby Atmos experience, ensure your main listening spot is centered between the front left and front right speakers, ideally near the center of the room. For detailed guidance, refer to the Dolby setup guide online.



Perform manual adjustment to fine tune the speakers parameter after the auto room test.

## H16 Modes

### Pure

- Plays the audio signal exactly as received, with all DSP, EQ, bass management, crossovers, and tone controls disabled.
- Only essential processing (like volume control) remains.
- Often used for audiophile listening or testing.

### Direct

- Similar to Pure, but may still allow basic processing such as:
- Bass management (subwoofer output)
- Speaker distance/delay
- Level trims
- Still keeps most DSP enhancements off.

### Stereo

- Converts the incoming signal into 2-channel left/right output.
- Subwoofer may be used depending on the speaker settings.
- Ideal for music listening with standard 2-speaker setups.

### Multi CH (Multichannel)

- Plays the audio in its native format across all available channels.
- Example: 5.1 → plays as 5.1, 7.1 → plays as 7.1
- No upmixing to additional speakers unless necessary.
- Multi CH mode uses full DSP features such as bass management and speaker calibration, while Pure mode bypasses all processing and sends the signals untouched to AES or AoIP outputs.

### Dolby Upmix (Dolby Surround)

- Upmixes any input (2-channel or multichannel) to your full speaker layout.
- Creates height and surround effects using Dolby processing.
- Best when you want immersive audio from non-Atmos sources.

## DTS Neural:X

- DTS's version of an immersive upmixer.
- Expands stereo or multichannel audio to the full speaker array.
- Often preferred for its more spacious and natural surround field.

Note: Starting from firmware V2.05.0734, the Speaker Layout menu only shows up to 7.1.4 channels. Beyond 7.1.4 (7.1.6 and 9.1.4) the channels are not supported.



### New Features added since firmware V2.05.0734.

Existing customers with firmware earlier than V2.05.0734, follow the Firmware Update guide on the product page.

## Speaker Crossover

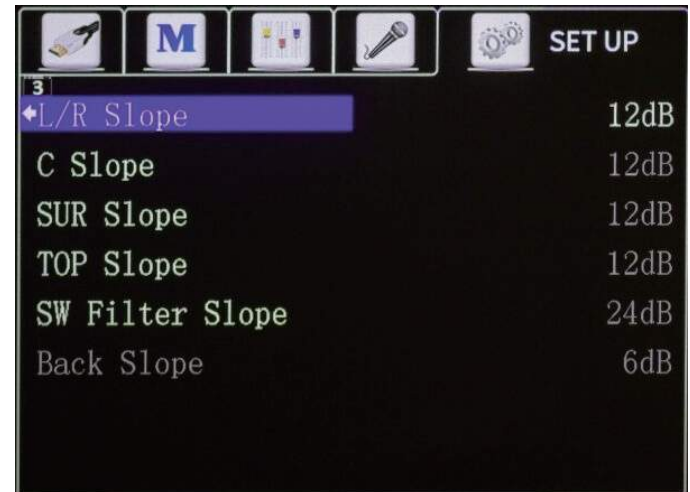
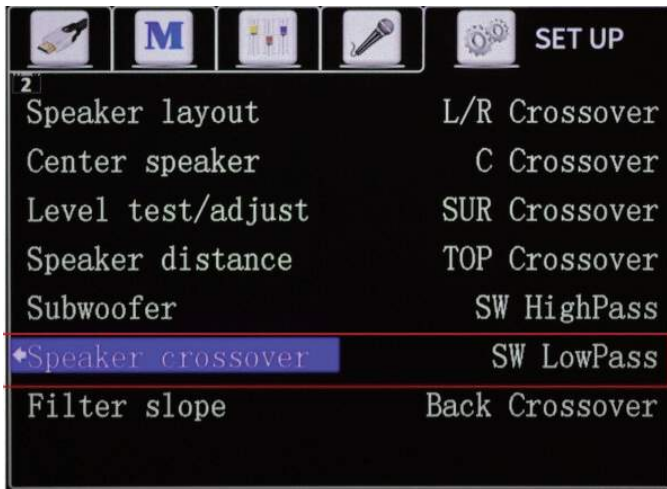
What Is a Crossover? A Simple Explanation.

When you set a crossover (frequency cutoff), you're telling your amplifier:

- Send sounds below a certain Hz to the subwoofer (Subwoofer).
- Send sounds above that Hz to the speakers (L/R, center, surround, etc.).

Common Recommendations

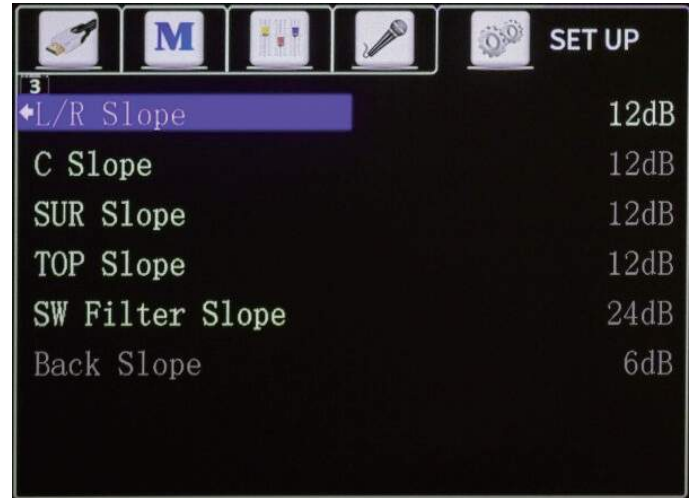
- 80 Hz is the standard THX setting and works for most speakers.
- Small speakers often use a crossover of 100–120 Hz.



## Crossover Settings

- L/R Crossover
  - Crossover point for the front left and right speakers.
  - Adjustment range: Bypass, 40 Hz–180 Hz
- Center (C) Crossover
  - Crossover setting for the center speaker.
  - Adjustment range: Bypass, 40 Hz–180 Hz
- Surround (SUR) Crossover
  - Crossover point for the surround speakers.
  - Adjustment range: Bypass, 40 Hz–180 Hz
- Top (Height / Atmos) Crossover
  - Crossover point for the height / Atmos speakers.
  - Adjustment range: Bypass, 40 Hz–180 Hz
- Subwoofer High-Pass (SW HighPass)
  - High-pass filter for the subwoofer.
  - Adjustment range: Not in use, 20 Hz–50 Hz
- Subwoofer Low-Pass (SW LowPass)
  - Low-pass filter (LPF) for the subwoofer.
  - Adjustment range: 40 Hz–250 Hz
- Back Crossover
  - Crossover setting for the rear/back surround speakers
  - Adjustment range: Bypass, 40 Hz–250 Hz

## Filter Slope



## What Is Filter Slope?

The filter slope describes how quickly a crossover reduces (or increases) the signal level beyond the crossover point. It's usually expressed in dB per octave (dB/Oct), such as:

- 12 dB/Oct (gentler slope)
- 18 dB/Oct
- 24 dB/Oct (steeper slope)

## Why Adjust the Filter Slope?

The slope affects how smoothly different speakers blend, as well as low-frequency directionality and tonal consistency.

Gentler Slope — 12 dB/Oct

- More natural blending between speakers
- Better tolerance of room acoustics
- Well-suited for larger floor-standing speakers

Steeper Slope — 24 dB/Oct

- Clearer separation between speaker roles
- Works well for small speakers
- Reduces frequency overlap between multiple speakers (helps avoid boomy bass)
- Produces cleaner and more precise subwoofer performance

L/R Slope (Left/Right Channel Slope) - Adjustment range: 12 / 24 dB

C Slope (Center Channel Slope) - Adjustment range: 12 / 24 dB

SUR Slope (Surround Channel Slope) - Adjustment range: 12 / 24 dB

TOP Slope (Height/Atmos Channel Slope) - Adjustment range: 12 / 24 dB

SW Filter Slope (Subwoofer Filter Slope) - Adjustment range: 12 / 24 dB

Back Slope (Rear/Back Channel Slope) - Adjustment range: 6 / 12 / 24 dB

## AES Outputs Speaker Layout

Reference table for output channel sequence vs speaker layout

Output Channel	Speaker Layout					
	5.1	7.1	5.1.2	5.1.4	7.1.2	7.1.4
1	L	L	L	L	L	L
2	R	R	R	R	R	R
3	C	C	C	C	C	C
4	LFE	LFE	LFE	LFE	LFE	LFE
5	Ls	Ls	Ls	Ls	Ls	Ls
6	Rs	Rs	Rs	Rs	Rs	Rs
7		Lrs	Ltm	Ltf	Lrs	Lrs
8		Rrs	Rtm	Rtf	Rrs	Rrs
9				Ltr	Ltm	Ltf
10				Rtr	Rtm	Rtf
11						Ltr
12						Rtr
13						
14						
15						
16						

## Connecting To Nuprime-X 8 Channels Device's AES Inputs

You don't need to understand how AES works if your goal is simply to connect the H16-AES to the NuPrime-X MCX-800AD or Fusion 8D in a full home theater setup. Just use a DB25 male-to-male cable as shown below.



## Connecting to Device with Two Channels AES Inputs

The 16 AES3 channels are output via two DB25 connectors following the Tascam pinout format, which is a standardized wiring scheme commonly used for multichannel digital or analog audio transmission.

### AES59

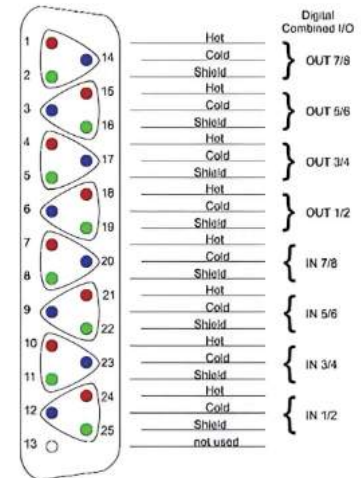
AES59 defines the pin-out and wiring standard for AES3 digital audio signals when transmitted over DB25 (D-sub) connectors. It ensures that multi-channel AES3 connections (typically 8 channels in and 8 channels out) are interoperable between different manufacturers' equipment — such as audio interfaces, consoles, and recorders.

- Connector type: DB25 (25-pin D-sub)
- Standardized mapping: Matches the TASCAM analog DB25 pinout, but carries digital AES3 signals instead of analog audio.
- Purpose: Provides a consistent way to connect multiple AES3 channels through a single cable.

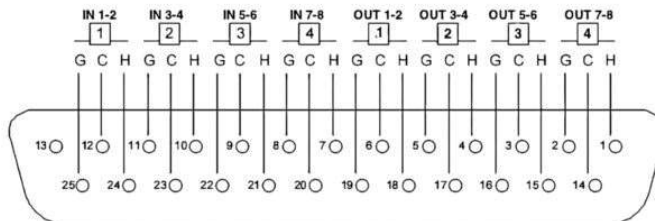
AES - Each DB25 port carries 8 channels (4 stereo pairs), so two DB25 connectors provide up to 16 channels of AES3 digital audio

AES3 Digital Audio	AES59-2012		
	Hot	Cold	GND
<b>Receive (RCV) INPUTS</b>			
1-2	24	12	25
3-4	10	23	11
5-6	21	9	22
7-8	7	20	8
<b>Transmit (XMT) OUTPUTS</b>			
1-2	18	6	19
3-4	4	17	5
5-6	15	3	16
7-8	1	14	2
Unused pins	13		

### AES59 (Tascam) AES3



(As viewed from solder side of male connector)



H = HOT  
C = COLD  
G = GROUND

**AES59 (DB25) to AES59 (DB25)**

<b>AES3 DB25-DB25 (Tascam Pinout) Pin Diagram</b>					
<b>Connector A</b>	<b>Connector A Pin</b>	<b>Connector B</b>	<b>Connector B Pin</b>	<b>8-Ch Cable Color</b>	<b>Wire Color</b>
<b>DB25 Male</b>	2	<b>DB25 Male</b>	8	<b>8-Gray</b>	<b>GND</b>
	1		7		<b>Hot-Red</b>
	14		20		<b>Cold-White</b>
	16		22	<b>7-Purple</b>	<b>GND</b>
	15		21		<b>Hot-Red</b>
	3		9		<b>Cold-White</b>
	5		11	<b>6-Blue</b>	<b>GND</b>
	4		10		<b>Hot-Red</b>
	17		23		<b>Cold-White</b>
	19		25	<b>5-Green</b>	<b>GND</b>
	18		24		<b>Hot-Red</b>
	6		12		<b>Cold-White</b>
	8		2	<b>4-Yellow</b>	<b>GND</b>
	7		1		<b>Hot-Red</b>
	20		14		<b>Cold-White</b>
	22		16	<b>3-Orange</b>	<b>GND</b>
	21		15		<b>Hot-Red</b>
	9		3		<b>Cold-White</b>
	11		5	<b>2-Red</b>	<b>GND</b>
	10		4		<b>Hot-Red</b>
	23		17		<b>Cold-White</b>
	25		19	<b>1-Brown</b>	<b>GND</b>
	24		18		<b>Hot-Red</b>
	12		6		<b>Cold-White</b>
	13		13		/

## AES59 (DB25) to AES3 (XLR)

AES3 DB25->XLR 4M4F (Tascam Pinout) Pin Diagram					
Connector A	Connector A Pin	Connector B	Connector B Pin	Connector # & Color	Wire Color
DB25 Male	2	3-Pin XLR Male	1	8-Gray	GND
	1		2		Hot-Red
	14		3		Cold-White
	16	3-Pin XLR Male	1	7-Purple	GND
	15		2		Hot-Red
	3		3		Cold-White
	5	3-Pin XLR Male	1	6-Blue	GND
	4		2		Hot-Red
	17		3		Cold-White
	19	3-Pin XLR Male	1	5-Green	GND
	18		2		Hot-Red
	6		3		Cold-White
	8	3-Pin XLR Female	1	4-Yellow	GND
	7		2		Hot-Red
	20		3		Cold-White
	22	3-Pin XLR Female	1	3-Orange	GND
	21		2		Hot-Red
	9		3		Cold-White
	11	3-Pin XLR Female	1	2-Red	GND
	10		2		Hot-Red
	23		3		Cold-White
	25	3-Pin XLR Female	1	1-Brown	GND
	24		2		Hot-Red
	12		3		Cold-White
		13	/	/	/

## NuPrime's Limited Warranty and Limitation of Liabilities

### ADDITIONAL RIGHTS

For consumers, who are covered by consumer protection laws or regulations in their country of purchase or, if different, their country of residence, the benefits conferred by this warranty are in addition to all rights and remedies conveyed by such consumer protection laws and regulations. This warranty does not exclude, limit or suspend any rights of consumers arising out of nonconformity with a sales contract. Some countries, states and provinces do not allow the exclusion or limitation of incidental or consequential damages or allow limitations on how long an implied warranty or condition may last, so the limitations or exclusions described below may not apply to you. This warranty gives you specific legal rights, and you may also have other rights that vary by country, state or province. This limited warranty is governed by and construed under the laws of the country in which the product purchase took place.

### LIMITED WARRANTY

For a period of ONE YEAR from the date of retail purchase by the original end-user purchaser ("Warranty Period"), NuPrime warrants (i) this product against defects in materials and workmanship, and (ii) that each Product, unmodified and under normal use and conditions, will substantially comply with NuPrime' applicable written technical documentation for the Product. NuPrime reserves the right to make substitutions and modifications from time to time in the specifications of Products sold by NuPrime, provided that such substitutions or modifications do not materially affect overall Product performance.

If a hardware defect exists and a valid claim is received within the Warranty Period, at its option and to the extent permitted by law, NuPrime will (1) repair the hardware defect at no charge, using new or refurbished replacement parts, (2) exchange the product with a product that is new or which has been manufactured from new or serviceable used parts and is at least functionally equivalent to the original product, or (3) refund the purchase price of the product. NuPrime may request that you replace defective parts with user-installable new or refurbished parts that NuPrime provides in fulfillment of its warranty obligation. A replacement product/part assumes

the remaining warranty of the original product or ninety (90) days from the date of replacement or repair, whichever provides longer coverage for you. When a product or part is exchanged, any replacement item becomes your property and the replaced item becomes NuPrime's property. When a refund is given, your product becomes NuPrime's property.

## **OBTAINING WARRANTY SERVICE**

If you purchased the product in the U.S., deliver the product, at your expense, to any NuPrime Service Center located in the U.S. If you purchased the product outside of the U.S., deliver the product to any NuPrime Authorized Importer in the country where you purchased the product. Be aware, however, that not all countries have NuPrime Authorized Service Providers ('NASP') and not all Authorized Service Providers outside the country of purchase have all parts or replacement units for the product. If the product cannot be repaired or replaced in the country it is in, it may need to be sent to a different country or returned to the country of purchase at your expense for repair or replacement. If you seek service in a country that is not the country of original purchase, you will comply with all applicable import and export laws and regulations and be responsible for all custom duties, V.A.T. and other associated taxes and charges. Where international service is available, NuPrime may repair or exchange defective products and parts with comparable products and parts that comply with local standards.

You can always deliver the product to NuPrime's U.S.A or Taiwan service center for obtaining warranty service, however, you may have to pay for shipping cost.

NuPrime may send you user-installable new or refurbished replacement product or parts to enable you to service or exchange your own product ("DIY Service"). Upon receipt of the replacement product or part, the original product or part becomes the property of NuPrime and you agree to follow instructions, including, if required, arranging the return of original product or part to NuPrime in a timely manner.

When providing DIY Service requiring the return of the original product or part, NuPrime may require a credit card authorization as security for the retail price of the replacement product or part and applicable shipping costs. If you follow instructions, NuPrime will cancel the credit card

authorization, so you will not be charged for the product or part and shipping costs. If you fail to return the replaced product or part as instructed or the replaced product or part is not eligible for warranty service, NuPrime will charge the credit card for the authorized amount.

## **EXCLUSIONS AND LIMITATIONS**

This Limited Warranty applies only to hardware products manufactured by or for NuPrime that can be identified by the "NuPrime" trademark, trade name, or logo affixed to them. The Limited Warranty does not apply to any non-NuPrime hardware products or any accessories, even if packaged or sold with NuPrime hardware. Non-NuPrime manufacturers, suppliers, may provide their own warranties. Other accessories distributed by NuPrime under the NuPrime brand name are not covered under this Limited Warranty. This warranty does not apply: (a) to damage caused by accident, abuse, misuse, misapplication, liquid contact, fire, earthquake, non-NuPrime products, or other external causes; (b) to damage caused by service performed by anyone who is not a NASP; (c) to a product or a part that has been modified without the written permission of NuPrime; (d) to consumable parts, such as batteries, or protective coatings designed to diminish over time unless failure has occurred due to a defect in materials or workmanship; (e) to cosmetic damage, including but not limited to scratches, dents, and broken plastic on ports; (f) to defects caused by normal wear and tear or otherwise due to the normal aging of the product; or (g) if any NuPrime serial number has been removed or defaced.

Important: Do not open the hardware product. Opening the hardware product may cause damage that is not covered by this warranty. Only NuPrime or a NASP should perform service on this hardware product.

This warranty and remedies set forth above are exclusive and in lieu of all other warranties, remedies and conditions, whether oral or written, express or implied. NuPrime specifically disclaims any and all implied warranties, including, without limitation, warranties of merchantability and fitness for a particular purpose. If NuPrime cannot lawfully disclaim implied warranties under this limited warranty, all such warranties, including warranties of

merchantability and fitness for a particular purpose are limited in duration to the duration of this warranty. No NuPrime reseller, agent, or employee is authorized to make any modification, extension, or addition to this warranty.

NuPrime is not responsible for direct, special, incidental or consequential damages resulting from any breach of warranty or condition, or under any other legal theory, including but not limited to lost profits, downtime, goodwill, damage to or replacement of equipment and property, any costs of recovering, reprogramming, or reproducing any program or data stored in or used with NuPrime products, and any failure to maintain the confidentiality of data stored on the product. NuPrime specifically does not represent that it will be able to repair any product under this warranty or make a product exchange without risk to or loss of programs or data.

Some states and provinces do not allow the exclusion or limitation of incidental or consequential damages or exclusions or limitations on the duration of implied warranties or conditions, so the above limitations or exclusions may not apply to you. This warranty gives you specific legal rights, and you may also have other rights that vary by state or province.

Proof of purchase in the form of a bill of sale or receipted invoice which is evidence that the unit is within the Warranty period must be presented to obtain warranty service.

Replacement as provided under this warranty is the exclusive remedy of the consumer. NuPrime shall not be liable for any incidental or consequential damages for breach of any express or implied warranty on this product. Except to the extent prohibited by applicable law, any implied warranty of merchantability or fitness for a particular purpose on this product is limited in duration to the duration of this warranty.



Beyond Ordinary